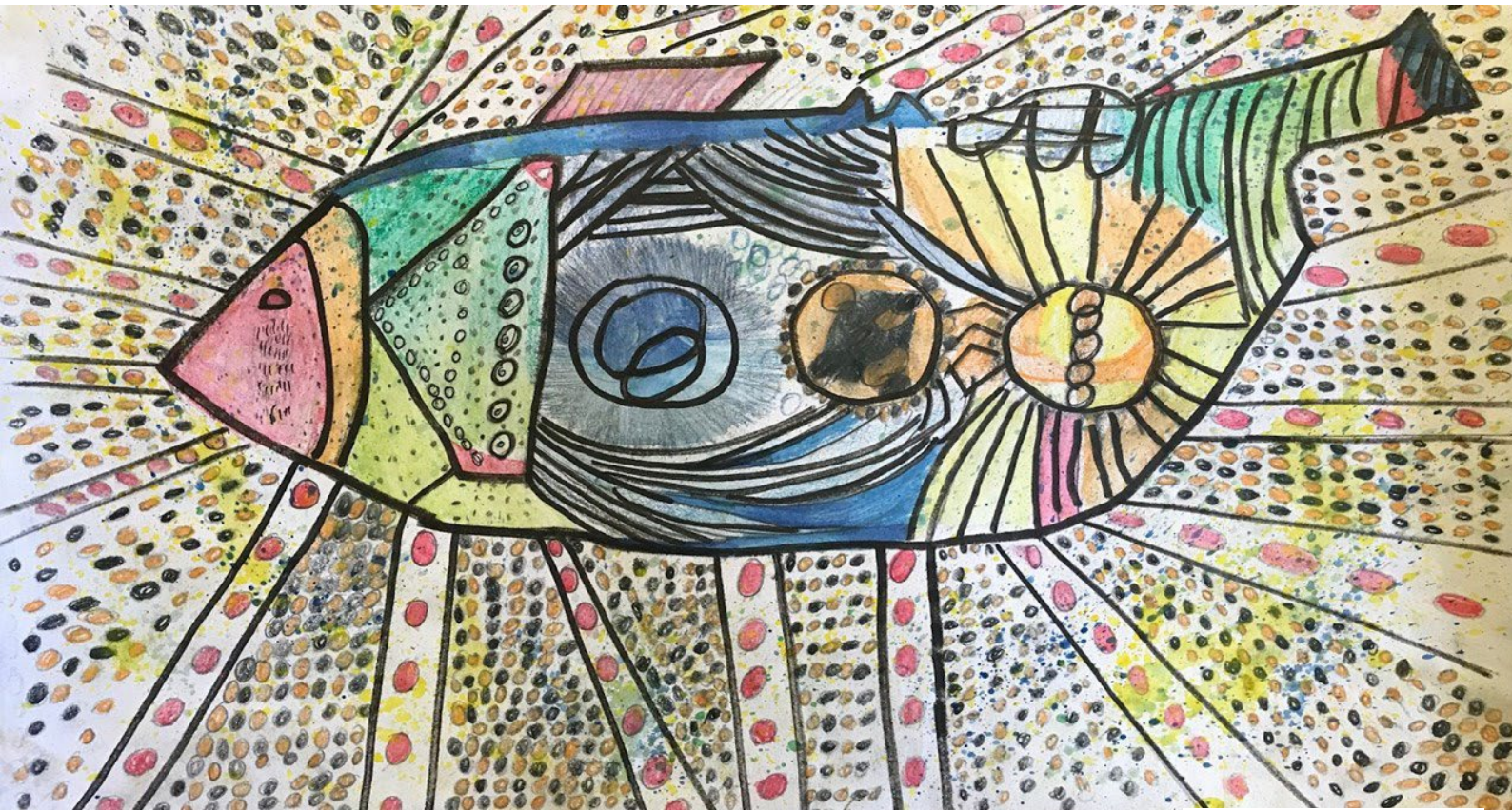


ASQUITH
BOYS
HIGH
SCHOOL



Joshua Wilson

YEAR 8
ASSESSMENT BOOKLET
2022



Table of Contents

CREATIVE TECHNOLOGY DESIGN	4
DRAMA	5
ENGLISH	6
GEOGRAPHY.....	7
HISTORY	8
HORTICULTURE.....	9
MATHEMATICS.....	10
MUSIC	11
PDHPE	12
PHOTO DIGITAL MEDIA	13
SCIENCE.....	14
TECHNOLOGY MANDATORY	15
VISUAL ARTS.....	16
YEAR 8 ASSESSMENT CALENDAR – TERM 1 2022	17
YEAR 8 ASSESSMENT CALENDAR - TERM 2 2022.....	18
YEAR 8 ASSESSMENT CALENDAR – TERM 3 2022	19
YEAR 8 ASSESSMENT CALENDAR – TERM 4 2022	20



A Message from the Principal

Congratulations on making the first major elective decision for your education journey at Asquith Boys High School. This is an important step towards identifying your interests and academic strengths that may ultimately shape your pattern of study for your Stage 5 courses.

You are very lucky at Asquith Boys High School to be able to undertake an elective throughout Year 8, to assist you to ultimately determine what subjects you really enjoy and those that are not to your liking. However, the expectation is that you will work to the very best of your ability in all subjects, in the classroom and at home, throughout Year 8. The best performance that you can achieve is attained through sustained attendance every day and dedication to completing all the necessary tasks effectively.

This booklet is compiled to allow you to plan your study program to effectively prepare for assessment tasks. Remember that homework and class tasks are items that demonstrate your achievement of outcomes. The successful achievement of these tasks is as important in the learning process as the assessment tasks in counting towards your final assessment.

It is important to be aware of all the requirements outlined in this handbook. Discuss your plans with the people whose judgement you trust, including your teachers and parents. Be prepared to undertake the next stage of your learning with determination and a willingness to always work to achieve your personal best.

There is no luck in success only hard work, preparation, planning and a great deal of determination. All any of us expect is that you use your talent to achieve your personal best in 2022 and beyond.

Bryce Grant
Principal.

Creative Technology Design

	Task 1	Task 2	Totals
Timing of task	Term 2 Week 5	Term 3 Week 9	
Type of task	Practical	3D Design Task	
Related Outcomes	SC4-6WS	SC4-9WS	
	50%	50%	100%
Task weighting %	50%	50%	100%

Drama

	Task 1	Task 2	Task3	Totals
Timing of task	Term 1 Week 10	Term 2 Week 5	Term 3 Week 4	
Type of task	Written - Quizizz	Practical - Animation - Script Writing	Performance - Script Starter Written - Reflection	
Related Outcomes	Year 8 4.3.2	4.1.2, 4.2.2, 4.3.3	4.1.1, 4.1.4, 4.2.3, 4.3.3	
Course Components				
Performing		20%	20%	40%
Making		15%	15%	30%
Appreciating	10%	10%	10%	30%
Task weighting %	10%	45%	45%	100%

English

	Task 1	Task 2	Task3	Task 4	Totals
Timing of task	Term 1, Week 11 (Digital submission on Google Classroom)	Term 2 Draft Due Week 8 Final due Week 10	Term 3, Week 9	Term 4, Week 5	
Type of task	Multimodal Information Text	Essay	Speech	Comprehension Exam	
Related Outcomes	EN4-1A, EN4-3B, EN4-4B, EN4-5C, EN4- 7D, EN4-9E	EN4-1A, EN4-3B, EN4- 4B, EN4-7D	EN4-1A, EN4-3B, EN4- 4B, EN4-5C, EN4-7D, EN4-8D	EN4-1A, EN4-3B, EN4- 4B, EN4-5C, EN4-7D, EN4-8D	
	25%	25%	25%	25%	100%
Task weighting %	25%	25%	25%	25%	100%

Geography

	Task 1	Task 2	Task3	Totals
Timing of task	Term 3 Week 4	Term 3 Week 10	Term4 Week 4	
Type of task	Skills Test	Research Report	Content Examination	
Related Outcomes	GE4-7, GE4-8	GE4-1, GE4-5	GE4-2, GE4-5	
Course Components				
GE4-1 Locates and describes the features and characteristic of environments.	20%			20%
GE4-2 Describes processes and influences that form and transform places and environments.			20%	20%
GE4-5 Discusses management of places and environments for their sustainability.	10%		10%	20%
GE4-7 Acquires and processes geographical information selecting and using geographical tools for inquiry.		20%		20%
GE4-8 Communicates geographical information using a variety of strategies.		20%		20%
Task weighting %	30%	40%	30%	100%

History

	Task 1	Task 2	Task3	Totals
Timing of task	Term 1 Week 5	Term 2 Week 1	Term 2 Week 5	
Type of task	Medieval Website	Age of Exploration Presentation	Content Examination	
Related Outcomes	HT4-4, HT4-6, HT4-9, HT4-10	HT4-3, HT4-4, HT4-8, HT4-10	HT4-3, HT4-4, HT4-6, HT4-10	
Course Components	%	%	%	%
HT4-3 Assess the motives and actions of past individuals.			25%	25%
HT4-4 Describes and explains the events and developments of past societies	20%		5%	25%
HT4-8 Use sources to develop an historical inquiry			10%	10%
HT4-10 Selects and uses appropriate forms to communicate about the past	5%	25%	10%	40%
Task weighting %	25%	25%	50%	100%

Horticulture

	Task 1	Task 2	Totals
Timing of task	Term 2 Week 5	Term 3 Week 9	
Type of task	Personal Interest Project	Portfolio	
Related Outcomes	SC4-6WS	SC4-9WS	
	50%	50%	100%
Task weighting %	50	50	100%

Mathematics

	Task 1	Task 2	Task3	Task 4	Task 5	Totals
Timing of task	Term 1 Weeks 6-7	Term 1 Week 9	Term 2 Week 5	Term 3 Week 8	Term 4 Week 5	
Type of task	Investigation	Class Assessment	Class Assessment	Class Assessment	Class Assessment	
Related Outcomes	MA41WM, MA42WM, MA4-3WM	MA4-1WM, MA4- 2WM MA4-3WM,MA4-8NA MA4-9NA, MA4-16MG	MA4-1WM, MA4- 2WM MA4-3WM,MA4-5NA MA4-10NA	MA4-1WM, MA4-2WM MA4-3WM,MA4-6NA MA4-7NA, MA4-17MG MA4-18MG	MA4-1WM, MA4-2WM MA4-3WM,MA4-11NA MA4-17MG	
Course Components	%	%	%	%	%	%
Knowledge, skills and understanding	5	7.5	12.5	12.5	12.5	50
Values and attitudes	5	7.5	12.5	12.5	12.5	50
Task weighting %	10	15	25	25	50	100%

Music

	Task 1	Task 2	Task3	Task 4	Task 5	Task 6	Totals
Timing of task	Term 1 W10	Term 2 W4	Term 2 W5	Term 4 W5	Term 4 W5	Term 4 W3	
Type of task	Rock and Roll Composition	Musicology Listening Exam	Rock Band Performance	Aboriginal Music Presentation	Aboriginal Music Performance	Music Theory Exam	
Related Outcomes	4.4, 4.5, 4., 4.9, 4.12	4.7, 4.8, 4.10	4.1, 4.2, 4.3, 4.4, 4.5, 4.6	4.7, 4.8, 4.9, 4.11	4.1, 4.3, 4.12	4.4, 4.5, 4.6, 4.11	
Course Components	%	%	%	%			%
Performance			20		15		35
Composition	20		5		5		30
Listening		10		10		15	35
Task weighting %	20	10	25	10	20	15	100

PDHPE

	Task 1	Task 2	Task3	Task 4	Totals
Timing of task	Ongoing Term 1 & 2	Week 2, Term 2	Ongoing Term 3 & 4	Week 2, Term 4	
Type of task	Practical performance	Examination	Practical performance	Examination	
Related Outcomes	PD4-4, PD4-8, PD4-11	PD4-7	PD4-4, PD4-8, PD4-11	PD4-2, PD4-3, PD4-5	
Course Components	%	%	%	%	%
Knowledge and understanding	-	25	-	25	50
Skills	25	-	25	-	50
Task weighting %	25	25	25	25	100%

Photo Digital Media

	Task 1	Task 2	Task3	Task 4	Totals
Timing of task	Week 8 Term 1	Week 5 Term 2	Week 5 Term 3	Week 4 Term 4	Practical 80% Critical Historical Study 20%
Type of task	Digital or Analogue Photography/Critical Historical Study	Digital or Analogue Photography	Digital or Analogue Photography/Critical Historical Study	Digital or Analogue Photography	
Related Outcomes	4.1 to 4.10	4.1 to 4.10	4.1 to 4.10	4.1 to 4.10	
Course Components					
Practical	20%	20%	20%	20%	80%
Historical/Critical	10%		10%		20%
Task weighting %	25%	25%	25%	25%	100%

Science

	Task 1	Task 2	Task3	Totals
Timing of task	Term 1 Week 9	Term 2 Week 7	Term 4 Week 4	
Type of task	Individual Student Research Project	Cell Model Research and Video Presentation	Yearly Exam	
Related Outcomes	SC4-5WS SC4-7WS SC4-8WS SC4-17CW	SC4-1VA SC4-8WS SC4-14LW	SC4-15LW SC4-11PW SC4-17CW SC4-8WS	
Course Components	%	%	%	%
Knowledge and Understanding	10	10	30	50
Skills	20	20	10	50
Task weighting %	30	30	40	100%

Technology Mandatory

	Task 1	Task 2	Task 3	Task 4	Totals
Timing of task	T1, W8	T2, W8	T3, W8	T4, W7	
Type of task	Design Project	Design Project	Design Project	Design Project	
Related Outcomes Students will follow a different focus area each term.	Agriculture and Food Technologies TE4-1DP, TE4-2DP, TE4-3DP, TE4-5AG, TE4-6FO, TE4-10TS	Agriculture and Food Technologies TE4-1DP, TE4-2DP, TE4-3DP, TE4-5AG, TE4-6FO, TE4-10TS	Agriculture and Food Technologies TE4-1DP, TE4-2DP, TE4-3DP, TE4-5AG, TE4-6FO, TE4-10TS	Agriculture and Food Technologies TE4-1DP, TE4-2DP, TE4-3DP, TE4-5AG, TE4-6FO, TE4-10TS	25%
	Digital Technologies TE4-1DP, TE4-2DP, TE4-4DP, TE4-7DI, TE4-10TS	Digital Technologies TE4-1DP, TE4-2DP, TE4-4DP, TE4-7DI, TE4-10TS	Digital Technologies TE4-1DP, TE4-2DP, TE4-4DP, TE4-7DI, TE4-10TS	Digital Technologies TE4-1DP, TE4-2DP, TE4-4DP, TE4-7DI, TE4-10TS	25%
	Engineered Systems TE4-1DP, TE4-2DP, TE4-3DP, TE4-8EN, TE4-10TS	Engineered Systems TE4-1DP, TE4-2DP, TE4-3DP, TE4-8EN, TE4-10TS	Engineered Systems TE4-1DP, TE4-2DP, TE4-3DP, TE4-8EN, TE4-10TS	Engineered Systems TE4-1DP, TE4-2DP, TE4-3DP, TE4-8EN, TE4-10TS	25%
	Material Technologies TE4-1DP, TE4-2DP, TE4-3DP, TE4-9MA, TE4-10TS	Material Technologies TE4-1DP, TE4-2DP, TE4-3DP, TE4-9MA, TE4-10TS	Material Technologies TE4-1DP, TE4-2DP, TE4-3DP, TE4-9MA, TE4-10TS	Material Technologies TE4-1DP, TE4-2DP, TE4-3DP, TE4-9MA, TE4-10TS	25%
Task weighting %	25%	25%	25%	25%	100%

Visual Arts

	Task 1	Task 2	Task3	Task 4	Totals
Timing of task	Term 1 Week 10	Term 2 Week 5	Term 3 Week 9	Term 4 Week 4	
Type of task	Artmaking Critical/Historical study	Artmaking Critical/Historical study	Artmaking Critical/Historical study	Artmaking	
Related Outcomes	4.1 – 4.10	4.1 – 4.10	4.1 – 4.10	4.1 – 4.10	
Course Components	%	%	%	%	%
Practical	20	20	20	20	80
Historical/Critical	5	5	10	5	20
Task weighting %	25	25	25	25	100%

YEAR 8 ASSESSMENT CALENDAR – Term 1 2022

Week	1	2	3	4	5	6	7	8	9	10	11
Term 1 2022	PDHPE Task 1	PDHPE Task 1	PDHPE Task 1	PDHPE Task 1	PDHPE Task 1	PDHPE Task 1	PDHPE Task 1	PDHPE Task 1	PDHPE Task 1	PDHPE Task 1	PDHPE Task 1
						Mathemat ics Investigati on Task Weeks 6- 7		PDM Digital or Analogue Photography/ Critical Historical Study	Science Individual Student Research Project Mathematics Task 2	Music Rock and Roll Composition Drama Written - Quizizz Visual Arts Artmaking Critical/ Historical	

YEAR 8 ASSESSMENT CALENDAR - Term 2 2022

Week	1	2	3	4	5	6	7	8	9	10
Term 2 2022	PDHPE Task 1	PDHPE Task 1 PDHPE Task 2	PDHPE Task 1	PDHPE Task 1 Music Musicology Listening Exam	PDHPE Task 1 PDM Digital or Analogue Photography Music Rock Band Performance Visual Arts Artmaking Critical/Histori cal study Drama Practical - Animation - Script Writing Mathematics Task 3	PDHPE Task 1 Music Listening and Theory Exam	PDHPE Task 1 Science Cell Model	PDHPE Task 1	PDHPE Task 1	PDHPE Task 1

YEAR 8 ASSESSMENT CALENDAR – Term 3 2022

Week	1	2	3	4	5	6	7	8	9	10
Term 3 2022	PDHPE Task 3	PDHPE Task 3	PDHPE Task 3	PDHPE Task 3 Drama Performance - Script Starter Written – Reflection	PDHPE Task 3 PDM Digital or Analogue Photography/ Critical Historical Study	PDHPE Task 3	PDHPE Task 3	PDHPE Task 3 Mathematics Task 4	PDHPE Task 3 Visual aArts Artmaking Critical/Historical study	PDHPE Task 3

YEAR 8 ASSESSMENT CALENDAR – Term 4 2022

Week	1	2	3	4	5	6	7	8	9	10	11
Term 4 2022	PDHPE Task 3	PDHPE Task 3 PDHPE Task 4	PDHPE Task 3 Music Music Theory Examination	PDHPE Task 3 Science Yearly Exam Mathematics Task 5 PDM Digital or Analogue Photography Visual Arts Artmaking	PDHPE Task 3 Music Aboriginal Music Presentation Aboriginal Music Performance	PDHPE Task 3					

